

# WORLD LITERATURE

*Ms. Kelsey Butler*

**BLOG** <https://MsKelseyButler.weebly.com>

**EMAIL** [Kelsey.Butler@cobbk12.org](mailto:Kelsey.Butler@cobbk12.org)

**MEET** *Thursdays @ 7:30am*

**HI THERE!**

*Welcome to 10th grade World Literature. This class is a college prep course designed for students who have an interest in interpreting literature from around the world. Get ready to explore!*

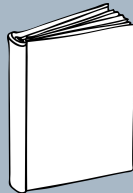
## TEXT ALERTS

Text your class code below to 81010 to receive daily messages about tests, quizzes, homework, and more.

1st period: @@84HEFE

2nd period: @@EKEDBD

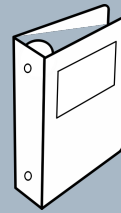
## MATERIALS



SpringBoard  
Textbook

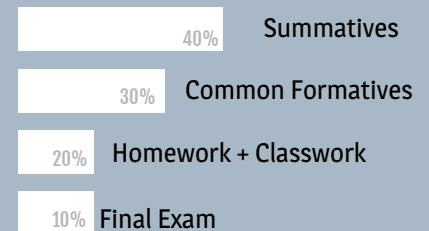


Blog



Binder

## GRADES



## SEMESTER AT A GLANCE

### UNIT 1 *Introduction & Culture*

*Students will explore their own cultural identity - what does it mean to be YOU? Culture Recipe, Identity Project, Cultural Reflection*

### UNIT 2 *Eastern Europe*

*We will study Anglo-saxon culture and explore the history of folklore. Anglo-Saxon Poster, A-S Boast, Fairytale Narrative*

### UNIT 3 *Western Europe*

*We will be reading Caesar, Macbeth, or Antigone and studying the structure of a play. Literary Analysis, Play Exam, One Act Play*

### UNIT 4 *Asia & Australia*

*We will study texts by a wide array of Asian authors with a focus on poetry and study the graphic novel Arrival. Storyboard & Synopsis, TBD Assignment, Poetry Book*

### UNIT 5 *South America*

*We will primarily read short stories in this unit that focus on culture. Flash Fiction, Peer Fiction Literary Analysis*

### UNIT 6 *Africa*

*We will be reading several excerpts of books that span across Africa Speed Debate, Perspective Re-write, Informational Essay*

### UNIT 7 *North America*

*We will be studying indigenous literature with an emphasis on folktales/oral histories TBD Assignment, Research Project*

# WORLD LITERATURE

## POLICIES & PROCEDURES

### ABSENTEE POLICY

It is the student's responsibility to check with a friend or the blog when absent.

Upon return, the student should complete all assignments missed. A student has five days to turn in any work assigned on a day a student was absent. If previously announced work (presentation/assignment/test) was due on the day of the absence, the work should be completed on the first day the student returns. (ex. On Monday, it's announced that an assignment is due Thursday. Student is absent on Thursday. Work is now due on Friday.)

NOTE: Students who are absent on the day of a presentation w/o an approved excuse will automatically lose a letter grade. Late work will be entered as a zero until submitted.

### LATE/MISSING WORK

Late work will be accepted for summative and formative assessments within each 6 week grading period. (ex. Missing work from the first 6-week grading period will not be accepted during the second or third 6-week grading period.)

Each day the work is late will count off a letter grade. (ex. Student A turns in summative assessment 3 days after original due date. The student receives a 70% if everything else on the paper is 100% correct. **Avoid this by doing the work on time!**) Late work will be entered as a zero until submitted. **Late work is graded late.**

Late/missing work needs to be submitted via the blog. *Key Dates:*

Resource: Office 365 How-to

LATE/MISSING WORK: Click [here](#) to submit late or missing work.

## I NEED HELP! NOW WHAT?

- 1 Download the REMIND app to receive text messages and message the teacher when needed.
- 2 Come in before school on Thursday mornings to get help from me -or- come M-TH to get assistance from all World Lit teachers.
- 3 Talk to me about additional study resources.

## BEHAVIORAL CONSEQUENCES

1. Verbal warning + student conference + parent contact (phone call, email, letter)
2. Discipline referral to administration (detention, TTD, ISS)
3. Parent conference

*The class blog is your access point for our classwork: <http://mskelseybutler.weebly.com/>  
Be sure to check your StudentVUE (and CTLSParent) to ensure you are keeping up with assignments.*

# WORLD LITERATURE

---

## ADDITIONAL INFORMATION

---

### TUTORING

---

Each World Literature teacher will have office hours that ALL students are welcome to attend; choose the time that works best for you!



Curtis: M 7:30-8:00 AM in FC 112  
Doar: Tu 3:30-4:00 PM in downstairs Dobbs  
Stockton: W 3:30-4:00 PM in FC 111  
Butler: TH 7:30-8:00 AM in SR 107

---

### MATERIALS

---

Students will need the following materials for this class:

Binder + Paper  
-OR - Notebook + Folder

Pencils  
Blue/Black Ink Pens

\*Essentially, you will need something to write with, something to write on, and somewhere to store it all.

---

### BLOG

---

This will be a place to keep you updated on upcoming assignments and due dates. Digital copies will be available for students and parents to access.

<https://MsKelseyButler.weebly.com>

---

### REASSESSMENT

---

Students are allowed and encouraged to reassess common assignments (labeled form or sum) in which they wish to improve their grade. However, there are a few conditions:

- 1) Must request reassessment within 10 days of the graded work.
- 2) For all summative assessments (tests, projects, essays) students must attend tutoring prior to reassessing.
- 3) Assignments that were plagiarized do not qualify for reassessment.
- 4) You can't REassess an assignment that you haven't assessed in the first place. Late work procedures should be followed in that case.